

SYREN



# TABLE OF CONTENTS

Our Mission. . . . . 1

**TARGET GUNS**

Target Guns Introduction . . . . . 2-3

SYREN TEMPPIO SPORTING. . . . . 4-5

SYREN ELOS N2 SPORTING . . . . . 6-7

SYREN L4S SPORTING . . . . . 8-9

SYREN TEMPPIO TRAP . . . . . 10-11

**HUNTING GUNS**

Hunting Guns Introduction . . . . . 12-13

SYREN TEMPPIO & TEMPPIO LIGHT . . . . . 14-15

SYREN ELOS D2 . . . . . 16-17

SYREN XLR5 Waterfowler. . . . . 18-19

Stock Dimensions . . . . . 20-23

Warranty / Brescia, Italy / Syren Gear . . . . . 24-25



## OUR MISSION

At Syren, we are passionate about the shooting sports and are driven to help more women become involved. We are obsessed with breaking down the traditional barriers to participation in shooting, hunting and the great outdoors. Our goal is to provide the equipment and knowledge that make the experience more enjoyable and less stressful. This is our mission.





*“Ladies in the industry, both new and seasoned shooters, are thrilled to have multiple choices with the Syren line that fit most women right out of the box. There really is something for everyone with over 70 different options.”*

— Melissa Porter, Shooting Industry Magazine

## SYREN TARGET GUNS

# Improve your game – whatever that game may be.

The path to better target scores is the right equipment. Syren has created clay target shotguns that don't require the compromises that come with having to shoot guns designed for men. They are carefully engineered to balance and point naturally with stock dimensions that fit the female anatomy. Whether your game is breaking a few clays on the weekend with your family or competing at the national championships, Syren has the right shotgun for your ambitions.

The commitment from Syren is not only making the perfect equipment. Our goal is to make the sport more enjoyable and accessible for all women shooters. We have a full staff of experienced women shooters that are available for advice and mentorship. You can contact us for guidance if you are someone interested in shooting for the first time or a top level competitor. Syren offers free stock fitting advice to make the experience more comfortable. Our pro staff host demo events almost every week in locations around the country. These advantages and our commitment to helping women enjoy this great sport is what makes Syren different.

For shooting clays, choose from our Syren Tempio, in four gauges with multiple barrel length options, the Syren Elos N2 Sporting with a standard adjustable comb and the Syren L4S Sporting if you desire a semi-auto. For Trap Shooters, your go-to gun is the Syren Tempio Trap with both an un-single and over/under barrel available individually or as a combo set. These models will help you improve your game – whatever that game may be.





The multi-axis DTS comb allows for the adjustment of: offset, cast, comb height, and comb drop. Available as an option on the 12 gauge only.



## SYREN TEMPIO SPORTING

The Syren Tempio Sporting was created to be the perfect target shotgun for everyone from beginners up to the top echelon of competitors. To make the gun handle and balance well, we have incorporated a lightweight set of barrels. By keeping extra weight out of the muzzle end of the gun, the balance is evenly distributed between the hands making the gun easier to handle. Another key feature is the stock. We went to great lengths to make sure we have created a shotgun that will fit the average female shooter better than ever before. We modified every aspect of the stock, not only to make the shotgun fit better but to also reduce felt recoil.

The Tempio Sporting includes a long list of performance features that make it a serious competition capable firearm. The barrels are over-bored and include 5" forcing cones to reduce recoil and increase ballistic performance. Additionally, the barrels and internal section of the competition choke tubes have been hard chromed for ease of maintenance. The trigger is adjustable for length-of-reach and is tuned to crisp 3.5lb. trigger pull.

Cosmetically our goal was to make a firearm that was both traditional and elegant, but distinctive in a way that separates it from the male oriented products. The action features a classic scroll and bouquet design with the roses tastefully highlighted in gold. The wood is deluxe grade of Turkish walnut hand polished with an oil finish. The result is a shotgun that is as beautiful as it is functional.



*"Women are built differently than men, with those "differences" never having been seriously addressed by any firearms company—until now, with the Syren line."*

— Sporting Clays Magazine

## SPECIFICATIONS

| Gauge         | 12  | 20                          | 28                          |
|---------------|---|-----------------------------|-----------------------------|
| Barrel Length | 28", 30"  | 28", 30"                    | 30"                         |
| Weight*       | 7lbs. 13oz., 7lbs. 15oz.  | 7lbs. 5oz., 7lbs. 7oz       | 7lbs. 4oz.                  |
| Action Finish | Hand polished coin finish with Invisalloy™ protective finish                |                             |                             |
| Stock         | Turkish Walnut with hand rubbed oil finish                                  |                             |                             |
| Top Rib       | Width 10mm-6mm Tapered  | Width 10mm parallel         | Width 10mm parallel         |
| Rib Height**  | 6mm   | 6mm                         | 6mm                         |
| Recoil Pad    | Black rubber  | Black rubber                | Black rubber                |
| Chamber       | 2.75"   | 2.75"                       | 2.75"                       |
| Forcing Cones | 5" DuoCon   | 4" DuoCon                   | Standard                    |
| Chokes        | 6 MAXIS competition chokes  | 6 CCP competition chokes    | 6 CCP competition chokes    |
| Trigger       | DTS trigger system with take up, over travel and length of pull adjustments |                             |                             |
| Case          | Hard Case with fit interior   | Hard Case with fit interior | Hard Case with fit interior |
| Warranty      | Lifetime warranty   | Lifetime warranty           | Lifetime warranty           |

Full specs available at [SyrenUSA.com](#) Also available in 32" barrel options as well as 20/28 and 20/28/.410 combos by special order only. \*Weights may vary based on wood density. \*\*Measured from the lowest point of the barrel.







## SYREN ELOS N2 SPORTING

With the new Syren Elos N2 Sporting, we set out to create the perfect sporting clays gun – the one we want to shoot. The first objective was to make the gun easy to handle and point. To reach this goal our engineers removed a considerable amount of weight out of the barrels, making the N2 one of the easiest handling target guns available today. The N2 follows the philosophy of being designed to fit Women shooters, but not all women are exactly the same. That is why we created a firearm customizable enough to fit just about everyone. To accomplish this, we incorporated the Micro-Metric 3D™ adjustable stock, adjustable trigger and interchangeable recoil pads making the Syren Elos N2 Sporting a great choice.

The first thing you will notice when you see the N2 is the clean lines and understated elegance. The action is finished in a soft satin to reduce glare and is enhanced with a subtle geometric pattern and signature purple accents. The stock and forend are crafted from Turkish walnut that has been enhanced by our proprietary TRIWOOD™ finish, which adds grain and water resistance. There are no compromises when it comes to performance features as well. Included are 5 EXIS HP™ competition choke tubes and the TRIBORE HP™ barrels for the ultimate in ballistic performance. Backed by a five-year warranty and industry-leading service, the Syren Elos N2 Sporting is an unbeatable value.



*“The Elos Sporting packs incredible quality into an affordable price in the realm of over-and-unders. The gun is well-designed, the wood-to-metal fit is immaculate. The Turkish walnut stock is gorgeous.”*

– Holly A. Heyser, Clay Target Nation

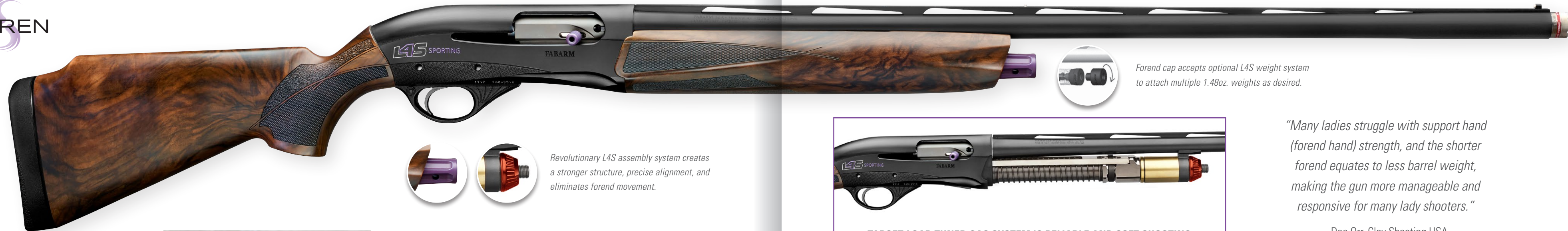
## SPECIFICATIONS

|               |  |
|---------------|--|
| Gauge         | 12 Gauge   |
| Barrel        | TRIBORE HP™  |
| Barrel Length | 30"  |
| Chamber       | 3"   |
| Chokes        | 5 EXIS HP™ Competition Choke Tubes                   |
| Action Finish | Black Satin  |
| Stock         | Turkish Walnut with TRIWOOD™ finish, Adjustable Comb |
| Top Rib       | 10mm to 8mm tapered, ventilated                      |
| Trigger       | Adjustable for length of pull                        |
| Recoil Pad    | Soft Black Rubber (Microcell 22mm)                   |
| Weight*       | 7lbs. 9oz.   |
| Case          | Hard Case with fit interior                          |
| Warranty      | 5 Years  |

Full specifications available at [SyrenUSA.com](https://www.SyrenUSA.com) \*Weights may vary based on wood density.







Revolutionary L4S assembly system creates a stronger structure, precise alignment, and eliminates forend movement.



Forend cap accepts optional L4S weight system to attach multiple 1.48oz. weights as desired.



TARGET-LOAD TUNED GAS SYSTEM IS RELIABLE AND SOFT SHOOTING

“Many ladies struggle with support hand (forend hand) strength, and the shorter forend equates to less barrel weight, making the gun more manageable and responsive for many lady shooters.”

— Dee Orr, Clay Shooting USA



## SYREN L4S SPORTING

If you want light weight and low recoil, this is the ideal shotgun for you. Our Syren L4S semi-automatic target shotgun offers very low recoil without the heavier weight of an over-under style gun. We made the forend shorter and trimmer to reduce weight and improve the overall balance making the L4S easy to handle and shoot. The L4S incorporates a reliable gas operating system that significantly softens the recoil of even heavy 12 gauge target loads.

The gas system is calibrated specifically for target loads. This allows the gun to function with the kind of light, low-recoil ammunition other semi-automatic shotguns can't handle. These features make the L4S one of the most enjoyable 12 gauge shotguns available to women shooters. Inline with our no-compromises approach, we've included all of the serious competition features you've come to expect. The barrels feature our TRIBORE™ tapered bore, EXIS HP™ hyperbolic chokes and tapered top rib. The stock has an easily interchanged shim system and available interchangeable recoil pads that allow you to perfectly fine-tune the fit. All of the controls such as the bolt release, safety and bolt handle are oversized competition style for easy use.

The combination of innovative design features and a passion for making a great semi-auto target shotgun for women, makes the Syren L4S Sporting a great choice for any shooter.

## SPECIFICATIONS

|               |                                      |
|---------------|--------------------------------------|
| Gauge         | 12 Gauge                             |
| Operation     | Stainless Steel Piston, gas operated |
| Barrel        | TRIBORE HP™                          |
| Barrel Length | 28", 30"                             |
| Chamber       | 2.75"                                |
| Chokes        | 5 EXIS HP™ Competition Choke Tubes   |
| Action Finish | Black Anodized                       |
| Stock         | Turkish Walnut with TRIWOOD™ finish  |
| Top Rib       | 11mm to 8mm tapered, Ventilated      |
| Recoil Pad    | Soft Black Rubber (Microcell 22mm)   |
| Weight*       | 6lbs. 12oz.                          |
| Case          | Hard Case with fit interior          |
| Warranty      | 5 Years                              |

Full specs available at [SyrenUSA.com](https://www.syrenusa.com) \*Weights may vary based on wood density and barrel length.



Oversized bolt handle and bolt-release operating buttons give the shooter a positive feel.



TARGET GUN





Factory release triggers are available for single and double barrels.

**OVER-AND-UNDER**  
Adjustable from 60/40 to 100% point-of-impact



**UNSINGLE**  
Adjustable from 60/40 to 120% point-of-impact

## SYREN TEMPIO TRAP



The Syren Tempio Trap is the first and only gun specifically tailored for female trap shooters. This *no compromises* competition shotgun puts a premium on performance as well as aesthetics. First and foremost, the shotgun needs to fit and handle properly. To accomplish this, Syren has created a stock that is designed to fit the female shooter. Some of the specialized dimensions include; length of pull, a smaller grip, and an increased pitch and cast to name just a few. The barrel and stock weight are calibrated to make the gun balance properly and easier to handle. To further customize the firearm we have incorporated the DTS (Dynamic Tuning System), which allows any shooter to tailor the gun to their individual style. The rib on both the over-and-under and unsingle barrel are adjustable for point-of-impact. The second aspect is the DTS comb, which moves four ways allowing the shooter to adjust the comb height, drop, offset, and cast. At the heart of the DTS system is the trigger, which is designed to meet the most demanding expectations with adjustable take-up, over-travel, and length of pull.

Another key feature is the Syren Tempio Trap guns durability, which is designed to meet the high volume demands of thousands of rounds a year. As if that wasn't enough, the Syren Tempio Trap is backed by an industry leading limited Lifetime Warranty and Service that is second to none.

Cosmetically the goal was to make a firearm that was both traditional and elegant, but distinctive in a way that separates it from the male-oriented products. The action features a classic scroll and bouquet engraving pattern highlighted by gold accents. The wood is a deluxe grade of Turkish Walnut that has been hand polished with an oil finish. The result is a shotgun that is as beautiful as it is functional.

## SPECIFICATIONS

| Model         | 12 Gauge Unsingl  | 12 Gauge Over-and-Under                        |
|---------------|---|--|
| Barrel Length | 32"   | 30"  |
| Weight*       | 8lbs. 6oz.  | 8lbs. 5oz.                                     |
| Action Finish | Hand polished coin finish with Invisalloy™ protective finish                |  |
| Stock         | Monte Carlo with DTS 4 way adjustable comb                                  |  |
| Top Rib       | 12mm tapered, DTS adjustable from 60/40 to 120                              | 12mm tapered, DTS adjustable from 60/40 to 100 |
| Rib Height**  | 25mm (adjustable)   | 25mm (adjustable)                              |
| Recoil Pad    | Ventilated Soft Black Rubber  | Ventilated Soft Black Rubber                   |
| Chamber       | 2.75"   | 2.75"  |
| Forcing Cones | 5" DuoCon   | 5" DuoCon                                      |
| Chokes        | 3 MAXIS competition chokes  | 5 MAXIS competition chokes                     |
| Trigger***    | DTS trigger system with take up, over travel and length of pull adjustments |  |
| Case          | Hard Case with fit interior   | Hard Case with fit interior                    |
| Warranty      | Lifetime warranty   | Lifetime warranty                              |

Full specs available at [SyrenUSA.com](#) \*Weights may vary based on wood density. \*\*Measured from the lowest point of the barrel. \*\*\* Factory selective release triggers available in single and double release.

## CUSTOMIZABLE BALANCE AND FIT



Optional DTS Kinetic Balancer system with multiple weights and micro adjustment. The system also includes kinetic recoil reduction and does not need to be removed to access the stock bolt when removing your stock.



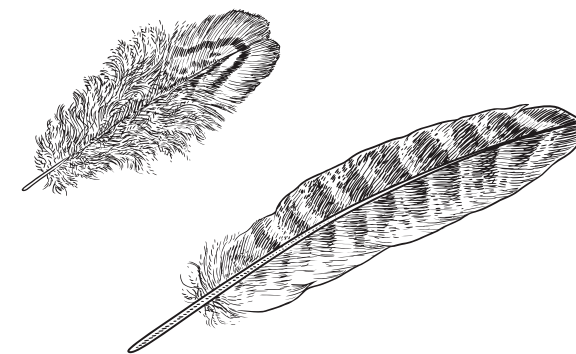
Barrel Balancer Weights are available for all Caesar Guerini over-and-under target barrels. Weights come as a set and are available in 30 gram each, 60 gram total.



The multi-axis DTS comb allows for the adjustment of: offset, cast, comb height, and comb drop. But adjustability is not helpful unless the system is rugged. The DTS comb hardware is light but extremely simple and strong; designed to stay exactly where you set it.





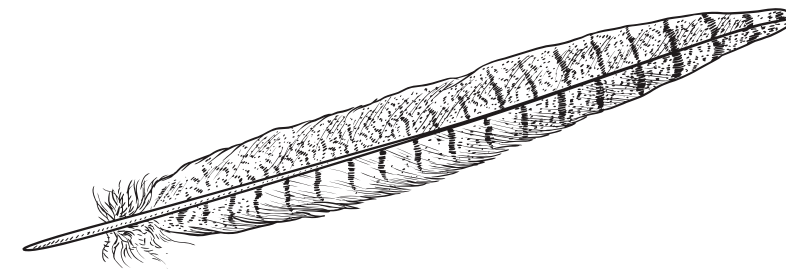


## SYREN HUNTING GUNS

# Create hunting memories that will last a lifetime.

If you are as passionate about the outdoors as we are at Syren, you understand the need to have the correct equipment. The last thing you need during long walks in the field is a heavy gun that is a chore to carry. Our shotguns are light and well balanced to be as responsive as possible making them easy to carry and shoot. All of our hunting guns are made to the same rigorous standards as our competition models ensuring they will give you a lifetime of service.

At Syren, our commitment to women hunters does not end with making just one model of shotgun. We know that you might want to hunt different types of game in different environments, so we offer the world's largest variety of hunting shotguns. If your passion is waterfowl, quail, turkey or pheasant, we have you covered.







## SYREN TEMPPIO & LIGHT

Responsive, perfectly balanced and engineered to fit a woman’s anatomy, the Syren Tempio and Syren Tempio Light are great birds guns for female hunters.

When a shotgun fits perfectly, the shooter will feel less recoil and be able to shoot accurately. That’s why the Syren Tempio has been designed specifically for women. Every stock dimension was carefully designed to fit the female anatomy. Particular attention has been given to the balance and weight of the shotgun to make it easy to handle – especially in tight cover.

The elegant action features a classic scroll and bouquet engraving motif. The wood is a hand finished deluxe grade of Turkish Walnut with checkering that incorporates a small flourish of carved roses to compliment the engraving. With all of these features and more, the Syren Tempio is the perfect companion for the American huntress.



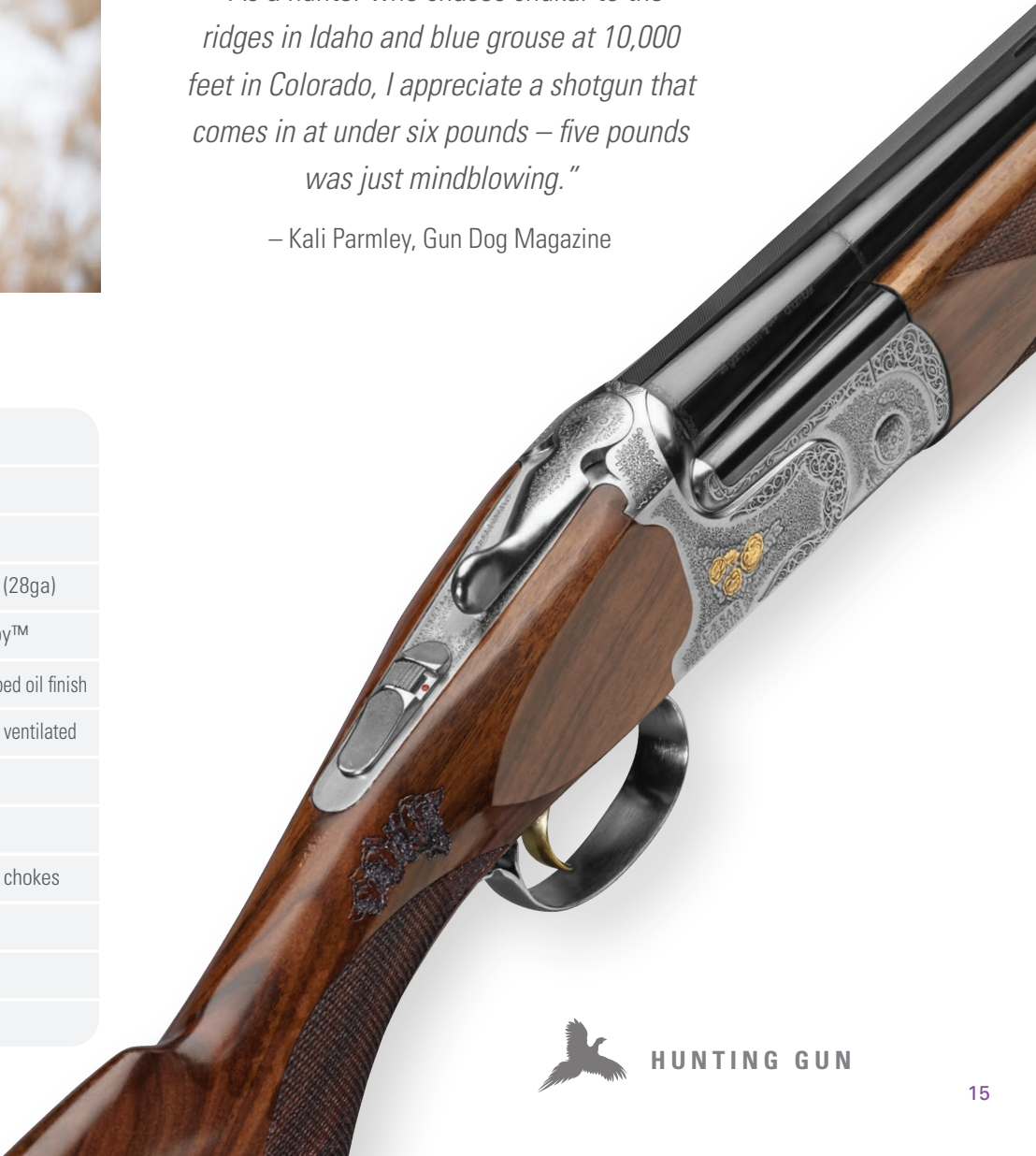
*“As a hunter who chases chukar to the ridges in Idaho and blue grouse at 10,000 feet in Colorado, I appreciate a shotgun that comes in at under six pounds – five pounds was just mindblowing.”*

– Kali Parmley, Gun Dog Magazine

## SPECIFICATIONS

| Model         | Syren Tempio                               | Syren Tempio Light                         |
|---------------|--|--|
| Gauge         | 20, 28 Gauge                               | 20, 28 Gauge                               |
| Barrel Length | 28"  | 28"  |
| Weight*       | 6lbs 9oz (20ga), 6lbs 4oz (28ga)           | 5lbs 10oz (20ga), 5lbs 5oz (28ga)          |
| Action Finish | Polished Coin finish with Invisalloy™      | Nickel Alloy with Invisalloy™              |
| Stock         | Turkish Walnut with hand rubbed oil finish | Turkish Walnut with hand rubbed oil finish |
| Top Rib       | Width 6mm (.24") parallel and ventilated   | Width 6mm (.24") parallel and ventilated   |
| Recoil Pad    | Wood butt plate                            | Wood butt plate                            |
| Chamber       | 3" (20ga), 2.75" (28ga)                    | 3" (20ga), 2.75" (28ga)                    |
| Chokes        | 5 nickel plated, flush fitting chokes      | 5 nickel plated, flush fitting chokes      |
| Trigger       | Single selective                           | Single selective                           |
| Case          | Hard case with fit interior                | Hard case with fit interior                |
| Warranty      | Lifetime warranty                          | Lifetime warranty                          |

Full specifications available at [SyrenUSA.com](https://www.SyrenUSA.com) \*Weights may vary based on wood density.







## SYREN ELOS D2

If you want one shotgun that is as appropriate in the field as it is in the gun club, the Syren Elos D2 is the perfect companion. It's trim action and sleek lines enhance its fast pointing characteristics, while it's light weight makes it easy to carry all day long. The full pistol grip stock and performance features make it just as effective on the sporting clays course.

A perfectly balanced combination of features allows the Syren Elos to excel as an all-around shotgun. The action depicts elegant scrollwork with upland birds in gold against a richly case colored finish. The stock dimensions have been tailored specifically for the female hunter and shooter. To further enhance the beauty of the wood we have applied our proprietary Triwood™ finish.



## SPECIFICATIONS

|               |                                     |
|---------------|-------------------------------------|
| Gauge         | 20, 28 Gauge                        |
| Barrel        | TRIBORE HP™                         |
| Barrel Length | 28"                                 |
| Chamber       | 3" (20ga), 2.75" (28ga)             |
| Chokes        | 5 INNER HP™ Flush Choke Tubes       |
| Action Finish | Case Colored                        |
| Stock         | Turkish Walnut with TRIWOOD™ finish |
| Top Rib       | 6mm Ventilated                      |
| Trigger       | Single selective                    |
| Recoil Pad    | Soft Black Rubber (Microcell 22mm)  |
| Weight*       | 6lbs. 5oz.                          |
| Case          | Hard Case with fit interior         |
| Warranty      | 5 Years                             |

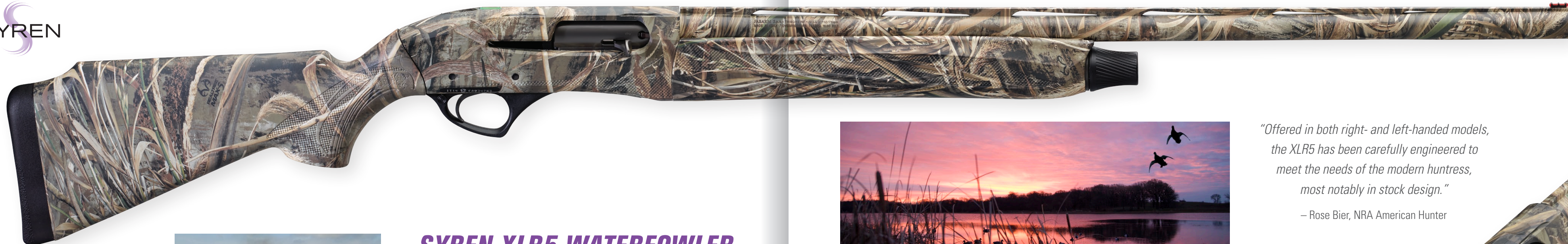
Full specifications available at [SyrenUSA.com](https://www.SyrenUSA.com) \*Weights may vary based on wood density.

*"If you haven't heard of Syren shotguns, you're missing out. Other companies have been known to put "pink it and shrink it" to the test on women's guns, others have designed a gun or two specifically for women, but no company exists solely to provide guns to female shooters. Syren is that company."*

— Sarah Smith Barnum, NRA Family







Stock shim system to custom adjust fit

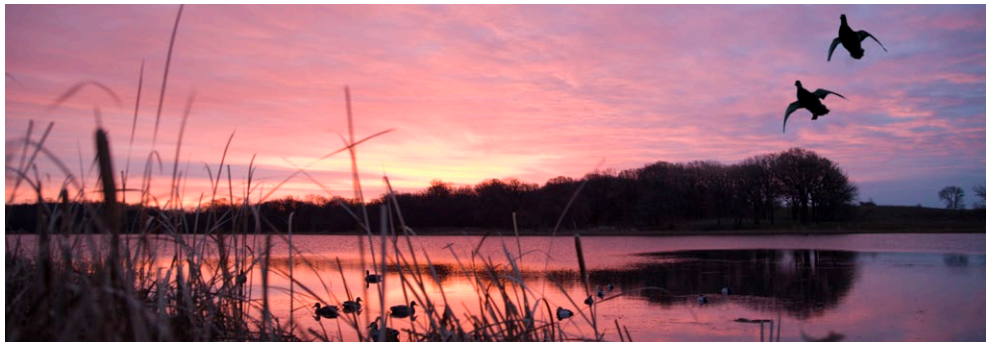
## SYREN XLR5 WATERFOWLER

Syren's mission is to create firearms that exceed the expectations of the modern huntress. With the Syren XLR5 Waterfowler, we created a shotgun that performs unlike anything currently available. First and foremost, it has to fit properly. We utilized our expertise in women's stock dimensions to create a shotgun that fits better than any standard men's or youth model.

To make the gun easy to carry and balance properly, we reduced the weight to 7 lb. 1oz\*, allowing for a smooth mount and easy handling in the duck blind or boat. To address recoil, the XLR5 utilizes a stock designed to fit the female anatomy and a recoil reducing, gas operating system to take the punishment out of modern high-performance waterfowl ammunition. The XLR5 Pulse Piston™ gas operating system accomplishes recoil reduction by bleeding off pressure as the gun cycles.

The Syren Waterfowler has been carefully engineered to provide the huntress with the ideal shotgun for creating hunting memories that last a lifetime.

\* Average weight of gun with 28" barrel. Weight may vary based on wood density.



*"Offered in both right- and left-handed models, the XLR5 has been carefully engineered to meet the needs of the modern huntress, most notably in stock design."*

— Rose Bier, NRA American Hunter

## SPECIFICATIONS

|               |  |
|---------------|--|
| Gauge         | 12 Gauge                                       |
| Operation     | Stainless Steel PULSE PISTON™, gas operated    |
| Barrel        | TRIBORE HP™                                    |
| Barrel Length | 28"  |
| Chamber       | 3"   |
| Chokes        | 5 INNER HP™ Choke Tubes                        |
| Finish        | Realtree MAX-5® Camouflage + Soft Touch finish |
| Weight*       | 7lbs 1oz.                                      |
| Proof test    | 1630 BAR                                       |
| Case          | Hard Case with fit interior                    |
| Warranty      | 5 Years  |

Full specifications available at [SyrenUSA.com](https://www.SyrenUSA.com) \*Weights may vary based on wood density.





### SYREN L4S SPORTING

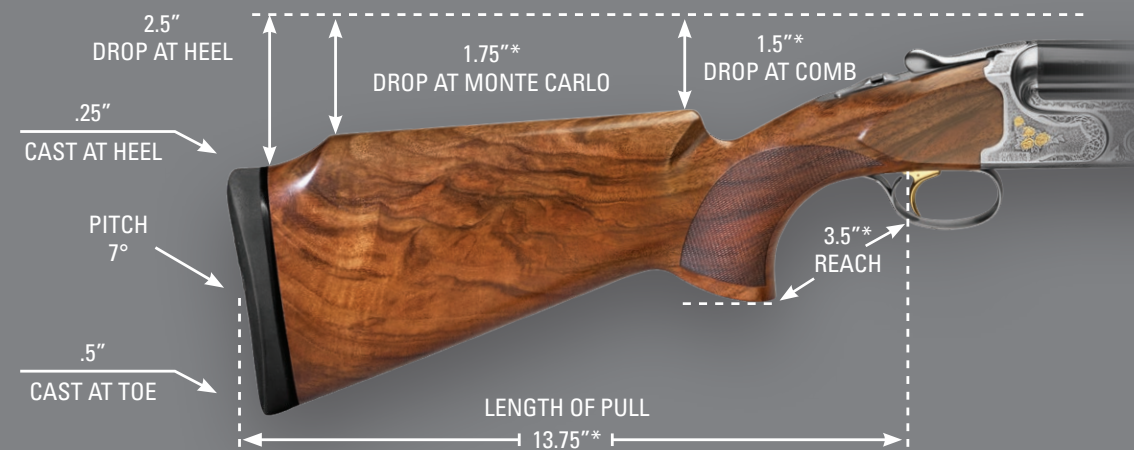


*All stock specifications are approximate and subject to change without notice.*



Compared to men, most women have longer necks and higher cheekbones. To accommodate this, we added a Monte Carlo comb which helps to bring the stock up to the ideal position for tuning-in the sight picture. This helps you to more accurately see down the barrel for acquiring the target.

### SYREN OVER-AND-UNDER SPORTING GUNS



*\*All stock dimensions are measured with the trigger in the rear position and comb in the lowest position.  
All stock specifications are approximate and subject to change without notice.*



On Syren guns with adjustable triggers, the reach can be customized for a variety of hand sizes. A T6 Torx wrench is supplied in the case of your gun and adjustments are very easy. Loosening the trigger with the wrench lets you to move the trigger forward and backward for a maximum length of travel of approximately 1/2".

### SYREN TEMPIO TRAP

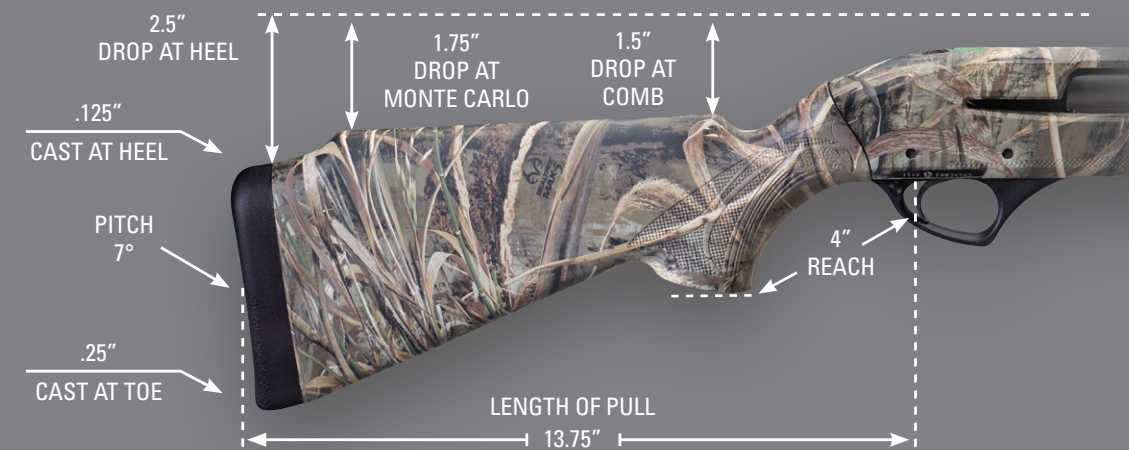


*\*All stock dimensions are measured with the trigger in the rear position and comb in the lowest position.  
All stock specifications are approximate and subject to change without notice.*



The rib on both the over-and-under and unsingle barrel of the Syren Tempio Trap gun is adjustable for point-of-impact. On the unsingle barrel, the rib is adjustable from 60/40 to 120%, and the over-and-under is adjustable from 60/40 to 100%.

### SYREN XLR5 WATERFOWLER



*All stock specifications are approximate and subject to change without notice.*



Water and mud can destroy a shotgun. To reduce the possibility of rust and corrosion, the barrel extension and bores are chrome plated. We have also PVD coated the bolt, nickel plated the chokes and covered the external metal surfaces with camo for added protection.



### SYREN ELOS D2



*All stock specifications are approximate and subject to change without notice.*

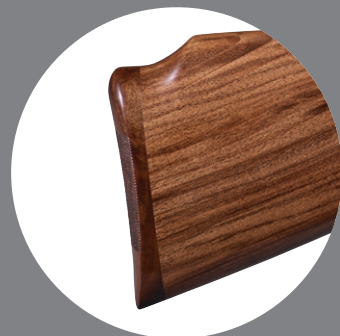


Women's hands are typically smaller than men's. So, Syren shotguns have a more slender grip with a shorter reach to the trigger making the shotgun noticeably easier to handle and more comfortable.

### SYREN TEMPIO & TEMPIO LIGHT



*All stock specifications are approximate and subject to change without notice.*



The wood butt plate on the Syren Tempio provides a snag-free surface so the shotgun does not get caught on your hunting attire. It also provides a custom touch often seen in the world's most expensive bespoke firearms.







## SYREN WARRANTY

In our desire to provide you with superior customer service in connection with your firearm, SYREN USA provides you with either a five-year warranty (Fabarm imported shotguns) or a limited lifetime warranty (Caesar Guerini imported shotguns) from the date of purchase for your firearm.

To benefit from this warranty, you will need to complete and return the Registration Card found in the case of your

firearm by certified or registered mail, or by filling out the Registration Form on our website within thirty (30) days of date of purchase. To read the full warranty disclosures please visit our website at **SyrenUSA.com** or if you have any question related to your warranty, please feel free to contact us at **info@syrenusa.com** or by calling Customer Service at **410-901-1131**.

## SYREN – BRESCIA, ITALY

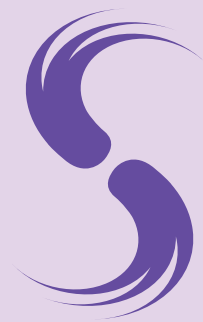
Syren L.L.C. is the first worldwide brand and leader of fine firearms designed exclusively for Women. Manufactured in Brescia, Italy, creating over-and-under and semi-automatic shotguns for the lady competitor, huntress and shotgun enthusiast. As a division of both Caesar Guerini and Fabarm, Syren firearms are manufactured by their respective modern manufacturing facilities. Both successfully combine legendary Italian gunmakers' craftsmanship with technologically state-of-the-art processes to produce firearms unequaled for their performance, beauty and value. Our penchant for precision and perfection is reflected through the more than 256 inspection points that every firearm passes. Each Syren shotgun is created to be as elegant and unique as their owners.



**SYREN GEAR AVAILABLE AT SYRENUSA.COM**







**410-901-1131**  
**SYRENUSA.COM**



@SyrenUSA #SyrenShotguns